

# DDNS Adjust manual

1. Connecting with IP Cameras or Network video server by IPRS. (How to use IPRS software, please according to IPRS manual to setup)

After viewing the video image from IPRS, click the left mouse on the image window, then open "option" menu, choose "Server Remote param" item, setup up parameters like below picture.

The screenshot shows a 'Parameters' window with a tree view on the left and a main configuration area on the right. The tree view includes 'Device Param', 'Channel Param', 'PTZ Param', 'Sensor Alarm Param', and 'Disk'. Under 'Device Param', 'Network Param' is selected. The main area contains several input fields and dropdown menus, with red boxes highlighting specific sections and red text boxes providing instructions.

Get parameters successful.

**Network Param**

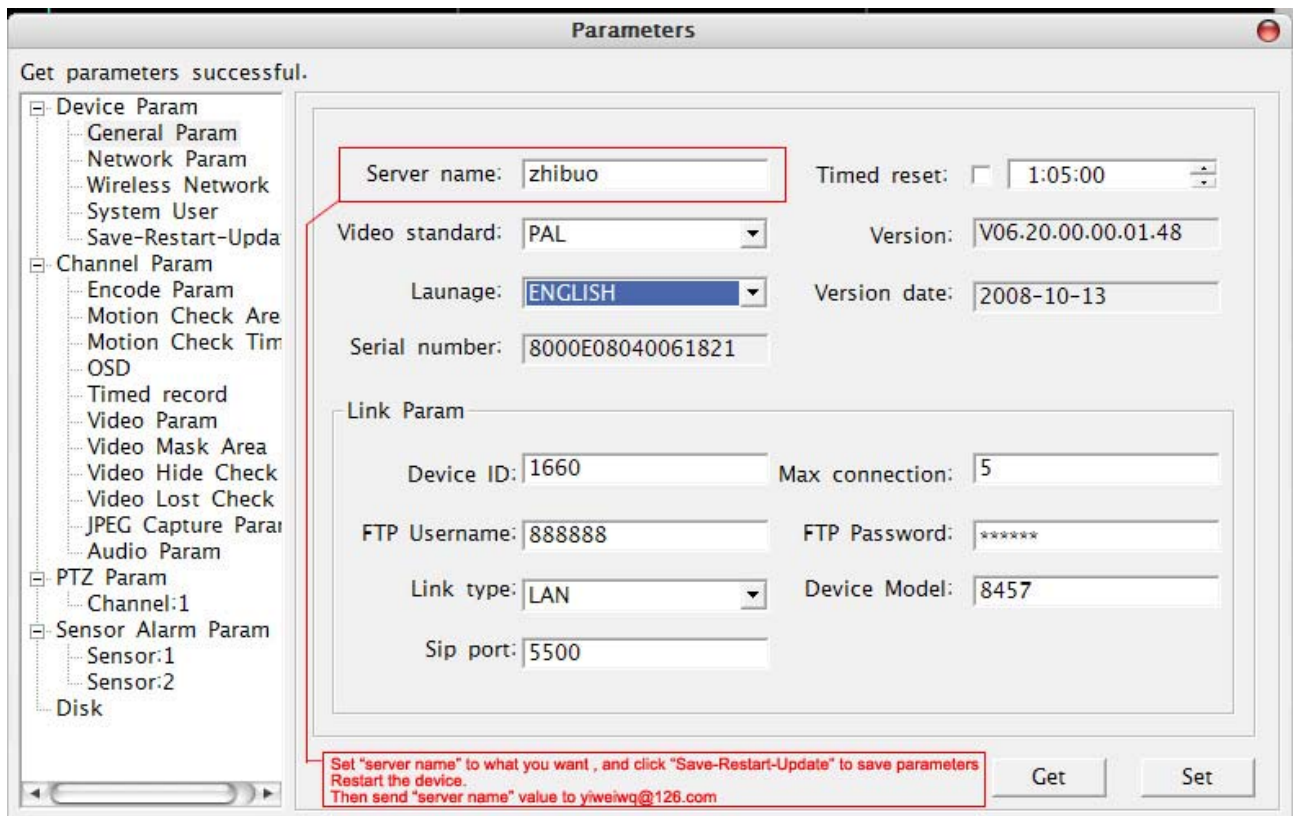
IP address:	192.168.0.191	Start DDNS:	Start
Netmask:	255.255.255.0	DDNS server address:	202.104.188.150
DNS address:	0.0.0.0	DDNS server port:	80
Gateway:	192.168.0.1	DDNS map port:	80
Multicast address:	235.1.1.1	Local port:	3000
Multicast port:	6500	WEB port:	80
Host alarm address:	0.0.0.0	Remote host address:	
Host alarm port:	8000	Remote host port:	3004
MAC:	00-E6-01-00-1B-B9	PPPOE:	Don't start
		PPPOE username:	
		PPPOE password:	

**Change IP address to the same IP scale as router's IP scale**  
**Change Gateway to router's IP**  
**DNS address : 0.0.0.0**  
**Don't change Multicast address and multicast port**

**Start DDNS: start**  
**DDNS server address: 202.104.188.150**  
**DDNS server port: 80**  
**DDNS map port: same with the Web port**  
**Local port: 3000**  
**WEB port: 80**

Get Set

After that, set "General Param" like below picture:



After setting , saving, restarting, please send the server name's value to [yiweiwq@126.com](mailto:yiweiwq@126.com), and we will register this dominant for you within 12 hours.

Please set the IP camera's IP and Web port & local port to virtual server of router.

For example, the IP's web port is 80, local port is 3000, you should set virtual server of router's web parameters.

**Add the IP address and port(80, 3000, 3001) of IP camera to the virtual server of router.**

After that, you can access with dominant by "server name's value+'.91ddns.com'" . For example ,the server name of your IP camera is "test", then ,you can browser by using "test.91ddns.com".